

Overview

Whether you operate a commercial office building or campus, an industrial plant, a retail chain or shopping mall, an educational or healthcare facility, Vykon Energy Suite gives you tools to directly impact your bottom line.

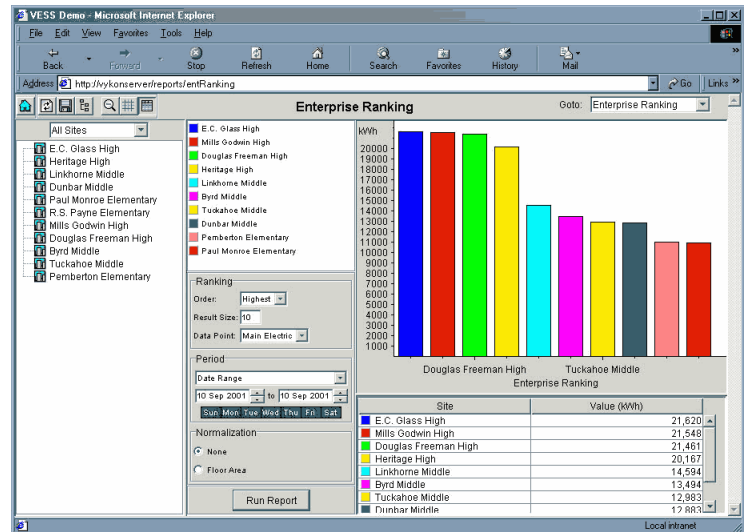
Vykon Energy Suite® (VES) is an applications suite designed to help manage energy and facilities. Built on the Niagara Framework®, VES has the ability to gather data from diverse systems including utility meters, building automation systems, and mechanical & electrical systems. VES integrates common protocols including Modbus, BACnet, OPC, and LonWorks. In addition, users can import data from a variety of sources including CSV, HTML, MV-90, and XML. There is no limit to the number of points that can be monitored. Beyond data gathering, VES provides building operators with a window into the energy usage across their portfolio with a web-based reporting suite.

Applications

E2 Profiler offers extensive reporting flexibility, allowing users to profile any data point over any period of time. Users can trend and analyse energy, temperatures, production, and other site data. The day of week selector allows users to define days or a combination of days to be considered in a given report. Fully browser-based, intuitive navigation tools make it easy to get the information when you need it, where you need it.

E2 Profiler utilises a robust time series database that enables complex, multi-faceted computations. Hundreds of thousands of records from years of data can be presented in web-based reports within seconds.

Energy Suite DATA SHEET



Features

- Installs on Niagara Web Supervisor
- Compare energy costs across multiple locations
- Access over the Internet / Intranet with a standard web browser
- Negotiate rates and contracts
- Dynamic profiling allows for transitioning between reports without redefining set parameters
- Universal comparison allows users to convert measurement units to a common unit
- Graphical zoom for more in-depth analysis
- Allows for aggregation of energy data “on the fly”
- Customisable Energy Portal Page and HTML frame support permits partners to develop product consistent with its company graphics and messaging
- Extensive data import capabilities allow interval data to be added to the database
- Localisation support provides quick translation into several languages
- Meets International Performance Measurement and Verification Protocol (IPMVP) guidelines

Functional Description

Energy Benefits

Users can analyse consumption, demand, and compute load factor with a click of the mouse. Meters can be aggregated and disaggregated on the fly to determine how underlying meters affect the total usage. E2 Profiler allows different commodities to be converted to a common measurement unit to aggregate and compare dissimilar energy types. In addition to the flexible reporting capabilities, E2 Profiler normalises potentially confounding variables such as weather and floor area to see what energy usage would have been under "normal" circumstances. With the comprehensive base-lining features, users can compare energy usage against historical levels, enabling users to track the results of their conservation efforts.

Enterprise Benefits

E2 Profiler provides sophisticated facility reporting to analyse production information, temperatures, chilled water, equipment status, and more. Users can determine correlations and perform other statistical analysis on buildings, equipment, and energy use. The exception report allows users to determine anomalies by comparing data values against a baseline or versus a user defined range. The equipment operation report allows users to compare runtime with runtime percentage information. E² Profiler provides a comprehensive M&V tool that meets International Performance Measurement and Verification Protocol (IPMVP) guidelines. The robust reporting capabilities make it the perfect tool for commissioning buildings and equipment.

E2 Profiler Reports

Aggregation Analysis – Computes consumption and demand along with load factor for a point or group of points.

Average Daily Profile – Displays an average 24-hour period for any day or combination of days.

Enterprise Ranking – Ranks meters in the enterprise to identify the most and least efficient buildings.

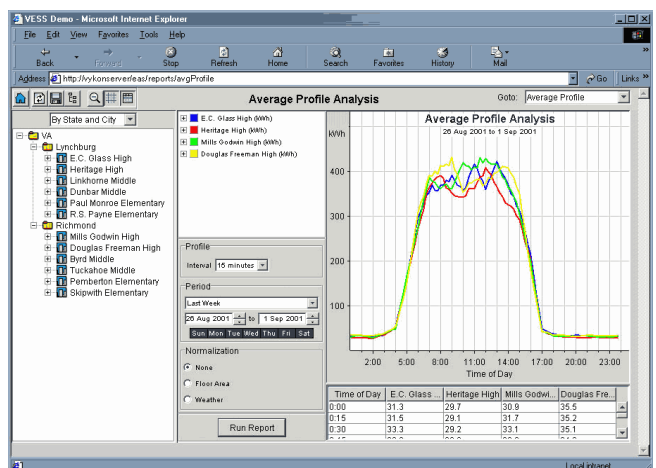
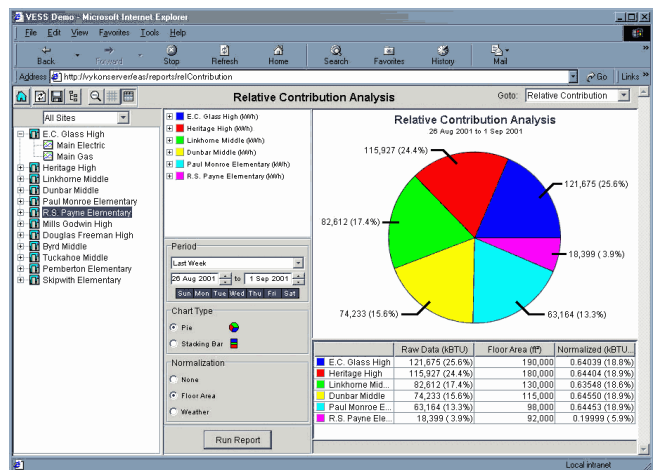
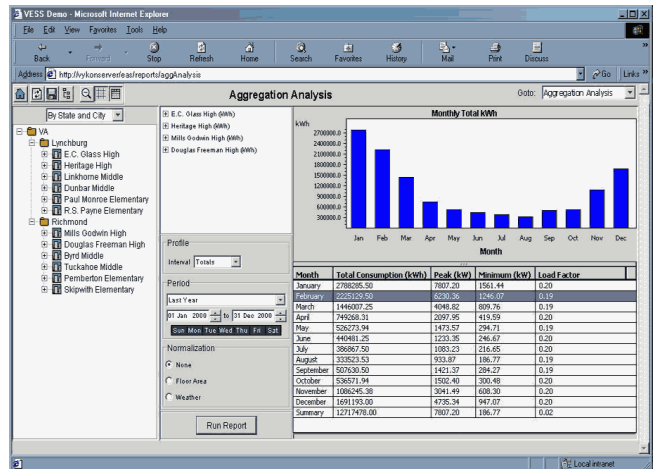
Equipment Operation – Displays runtime and runtime percentage for digital points.

Exceptions – Allows users to compare data values versus a baseline or against a defined range of values.

Point Trending – Performs statistical analysis to determine correlations, standard deviations, slope, regression line, and mean.

Relative Contribution – Determines how sub-meters or multiple main meters contribute to total energy within or between sites.

Spectrum Summary – Utilises pattern recognition to quickly identify anomalies with inconsistent patterns indicating a need for more detailed analysis.



How to Order

VES-BASE	Basic VES suite with 10 point E2 profiler
EP-Point50	Energy Profiler 50 points
EP-Point100	Energy Profiler 100 points
EP-Point500	Energy Profiler 500 points
EP-Point1000	Energy Profiler 1000 points

Additional information about Tridium is available at www.tridium.com

Tridium Europe Ltd

1 The Grainstore, Brooks Green Road,
Coolham, West Sussex RH13 8GR, UK
T +44 (0) 1403 740290 F +44 (0) 1403 741804